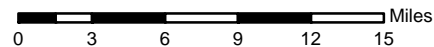


McNary-John Day Transmission Line Project

Legend

- Project Route
- Indian Reservation Boundary
- Existing BPA Transmission Lines
- County Boundary
- BPA Substation

1 inch = 7.9 miles



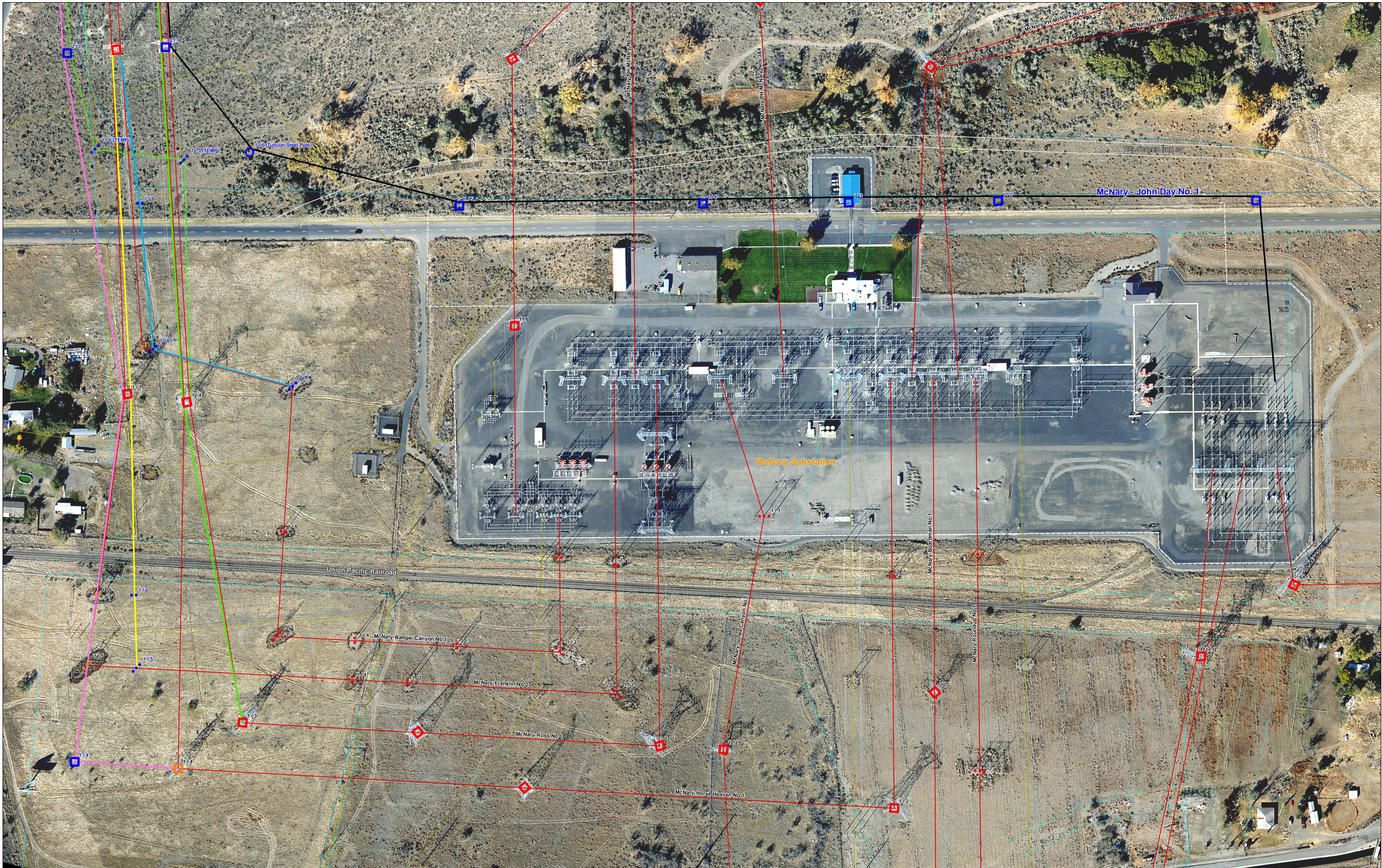


Exhibit dated 11/18/2009

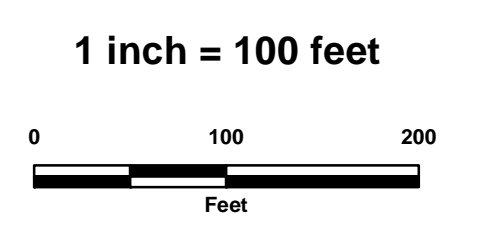
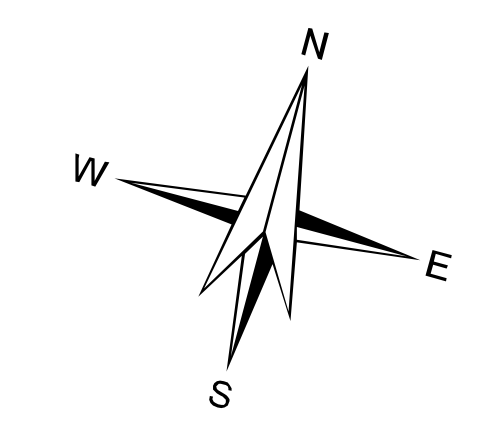
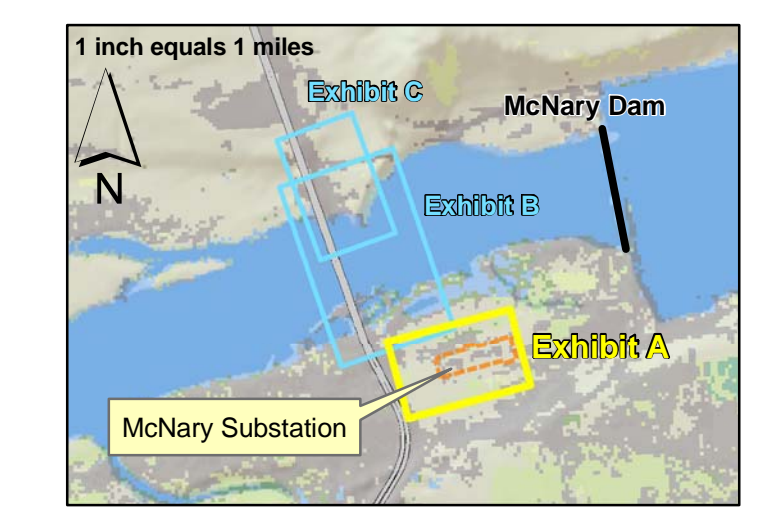
- | | | |
|--|--|--|
| <ul style="list-style-type: none"> ■ Steel Tower (Design) ■ Steel Tower (Existing, Will Be Removed) ■ Steel Tower (Existing) ●●● Triple Wood Pole (Design) ●●● Triple Wood Pole (Existing, Will Be Removed) ●●● Triple Wood Pole (Existing) ●● Double Wood Pole (Design) ●● Double Wood Pole (Existing, Will Be Removed) ●● Double Wood Pole (Existing) | <ul style="list-style-type: none"> — McNary - John Day No. 1 500-kV --- McNary - Ross No. 1 345-kV (Temporary) — McNary - Ross No. 1 345-kV — McNary - Horse Heaven No. 1 230-kV — McNary - Franklin No. 2 230-kV — McNary - Badger Canyon No. 1 115-kV — Existing Lines — Non-BPA Lines | <ul style="list-style-type: none"> --- BPA Right-of-Way (Acquired) ▭ Substation Fenceline ⊙ Water Valve — Water Line |
|--|--|--|

Aerial Imagery Captured October 2007

McNary River Crossings

McNary - John Day Phase 3

Exhibit A



This product was made for informational and display purposes only and was created with best available data at time of production. It does not represent legal information or boundaries.